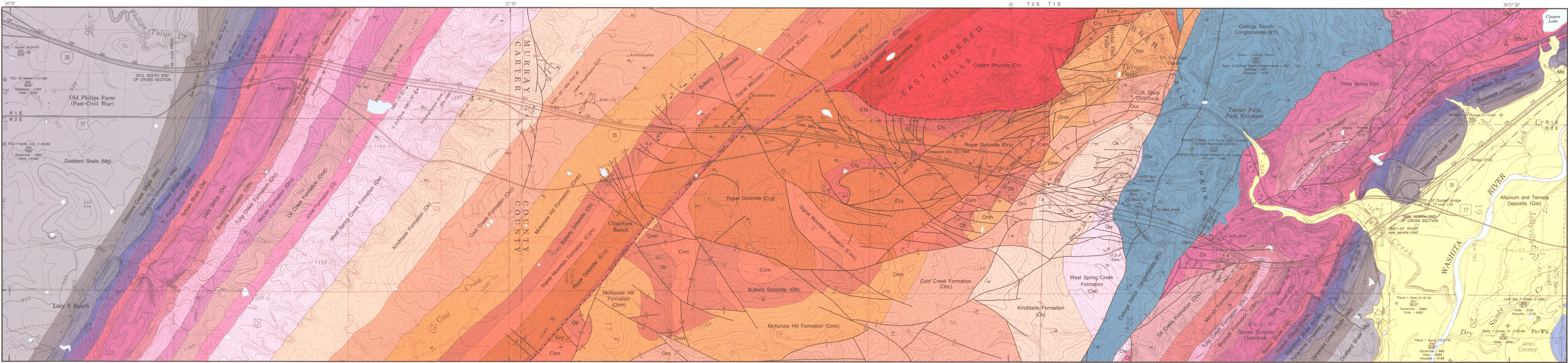


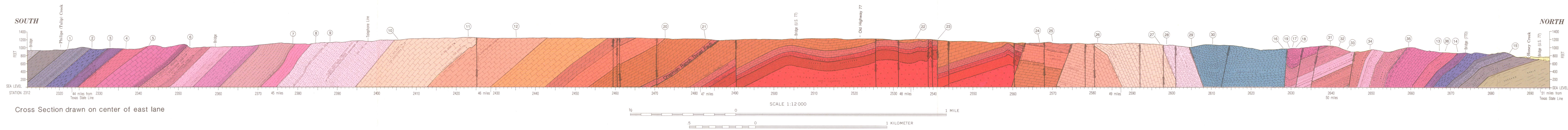


Aerial Photograph from Oklahoma Department of Transportation



Geology by R.O. Fay, October 1955-56, based  
on work by H.L. Hunt, 1925; 1954-54  
Cartography by Adam P. Radzinski, Cartography Manager, T. Wayne Furr

Base from U.S. Geologic Survey 7.5-minute quadrangle  
map series 1:250,000, Shogren, 1975; Gore July, 1979,  
Springer, 1979; Turner Falls, 1979



GEOLOGIC MAP AND CROSS SECTION ALONG INTERSTATE 35, THROUGH ARBUCKLE ANTICLINE, CARTER AND MURRAY COUNTIES, OKLAHOMA

By  
Robert O. Fay  
1989