

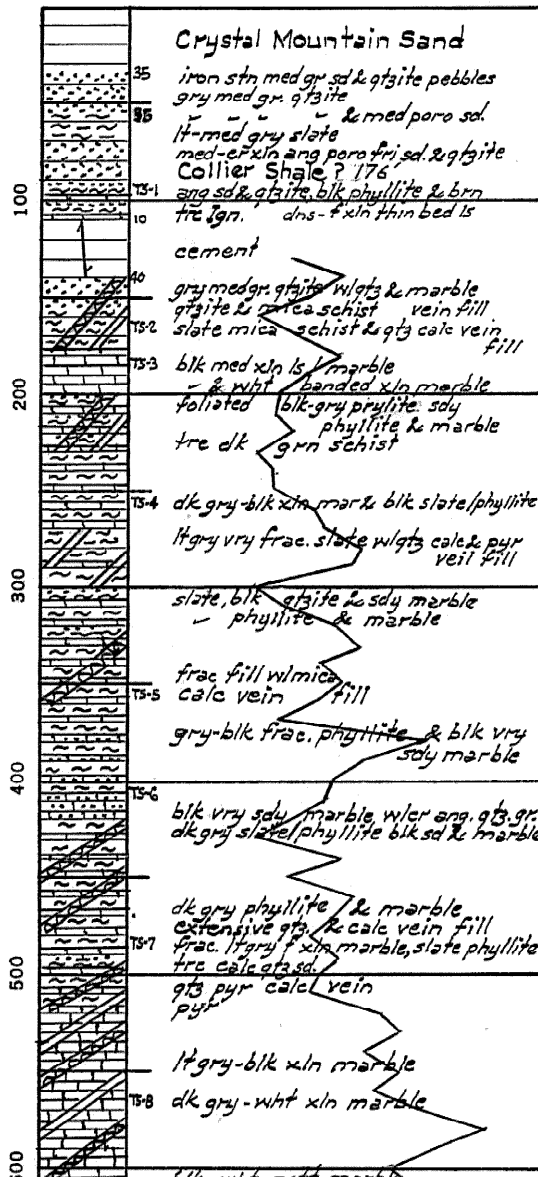
North Texas Sample Log Service
No. 4655

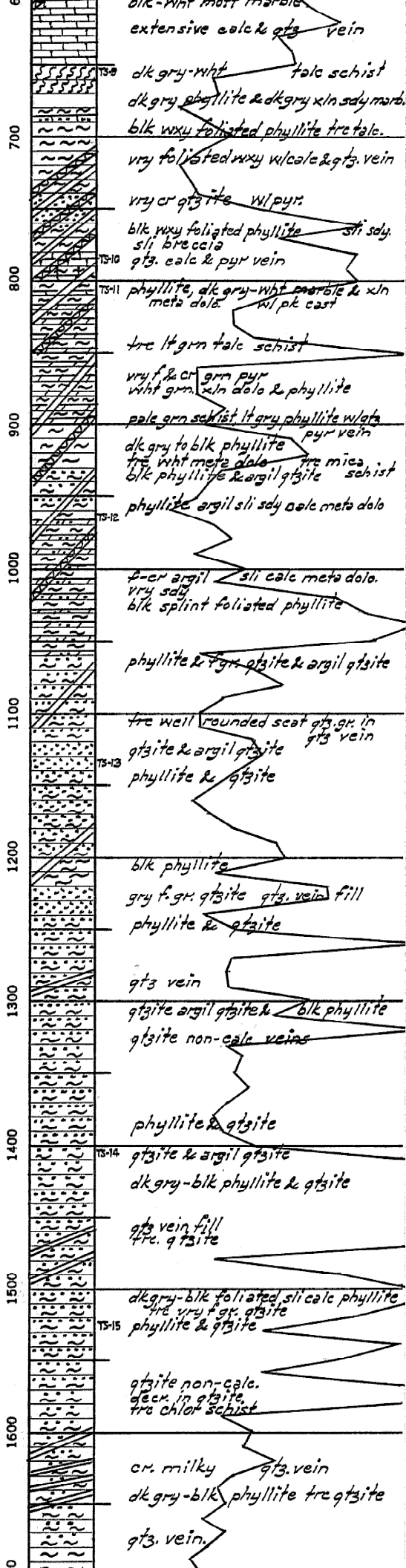
STATE Oklahoma	STANDARD OIL COMPANY PRODUCTION CO.	
COUNTY McCurtain	FARM WEYERHEAUSER 22-1	WELL NO.
BLOCK	SURVEY 800' FNL & 2300' FEL of Sec.	
SEC. 22		
T. 5S	R. 24E	TOTAL DEPTH, 19,000
		COMMENCED
		COMPLETED
	REMARKS Desc. by M.D. Allison	
ALTITUDE 625' GL. 658' KA		
PRODUCTION		

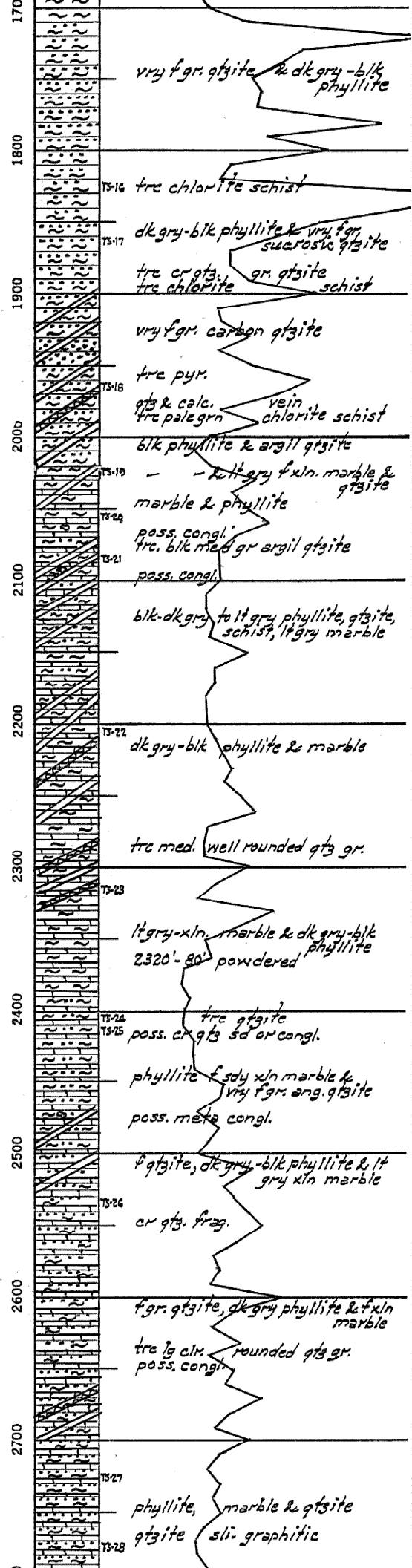
CASING RECORD

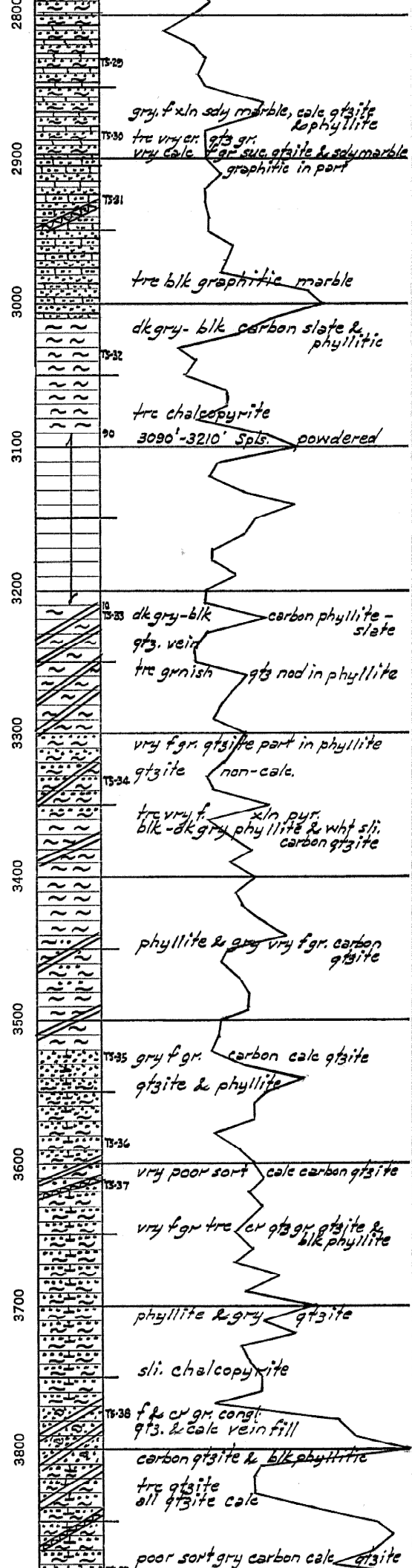
SHOT	QUARTS	BETWEEN

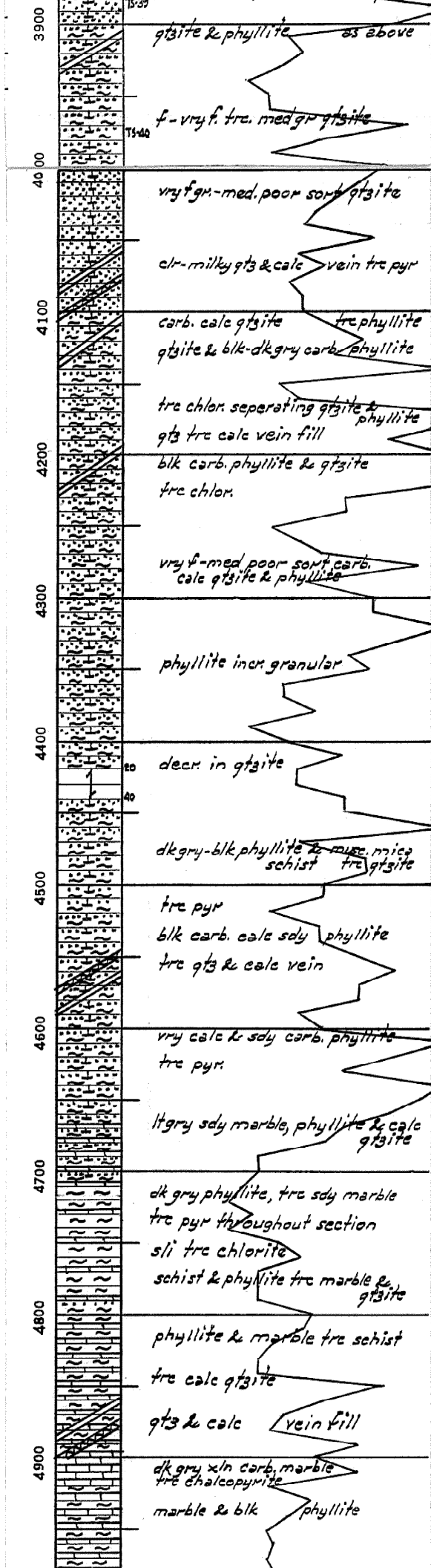
186 TULSA, OKLAHOMA 74101 PRINTED IN U.S.A.

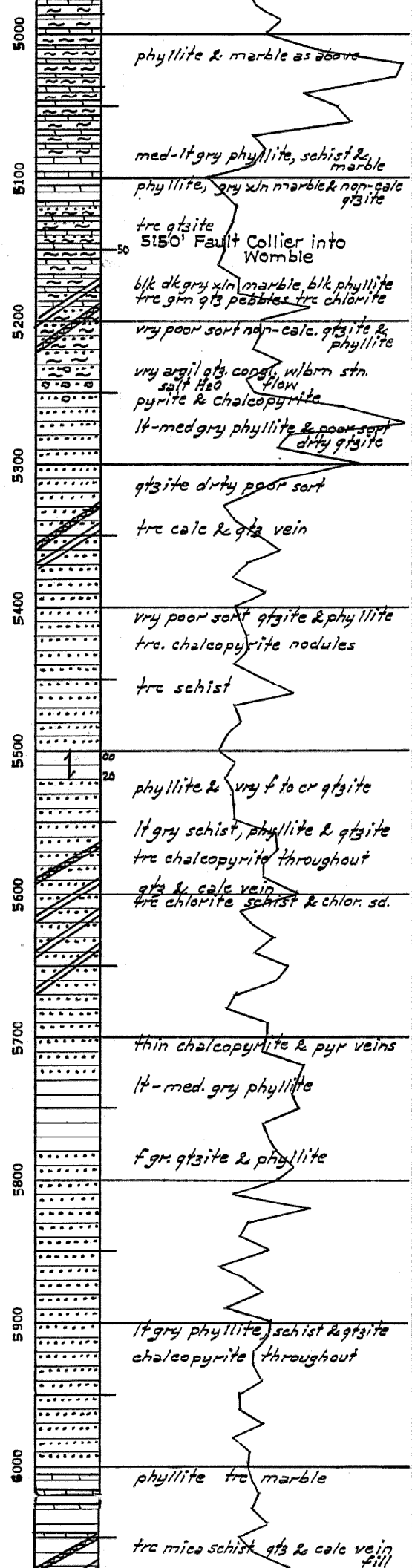


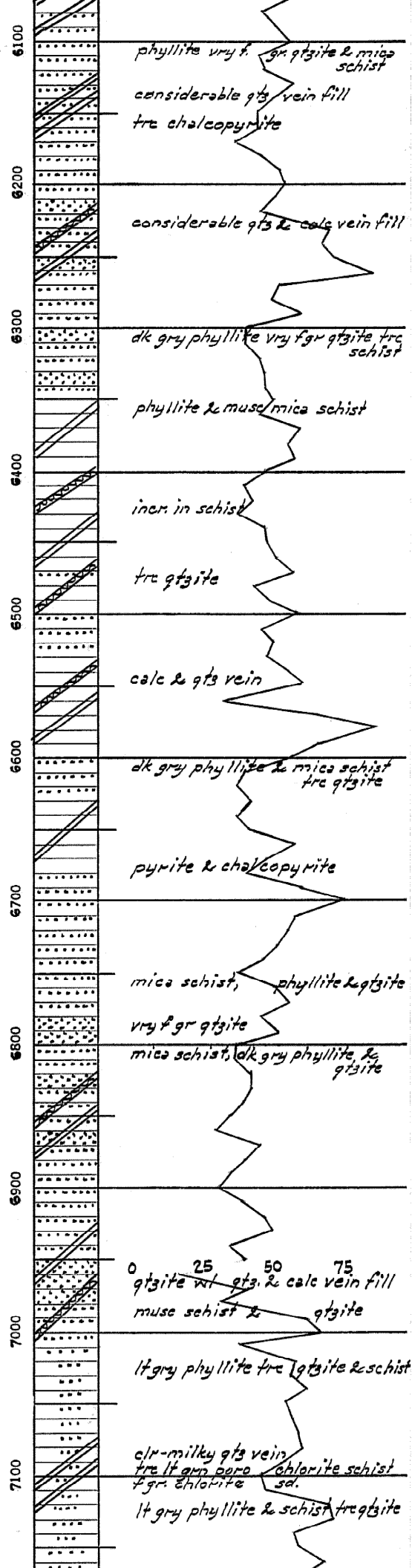


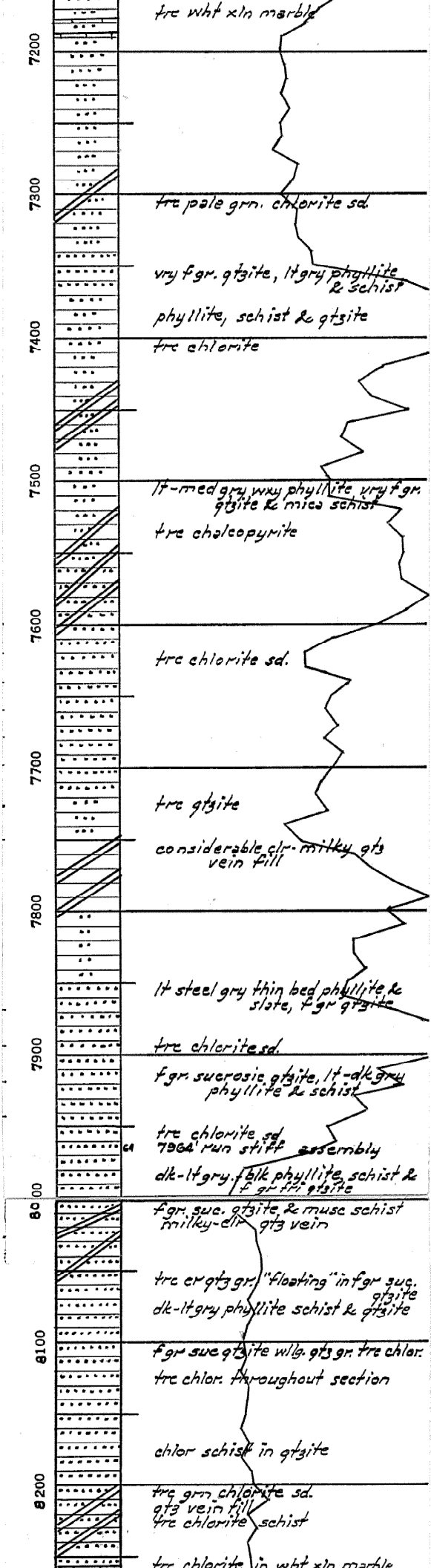


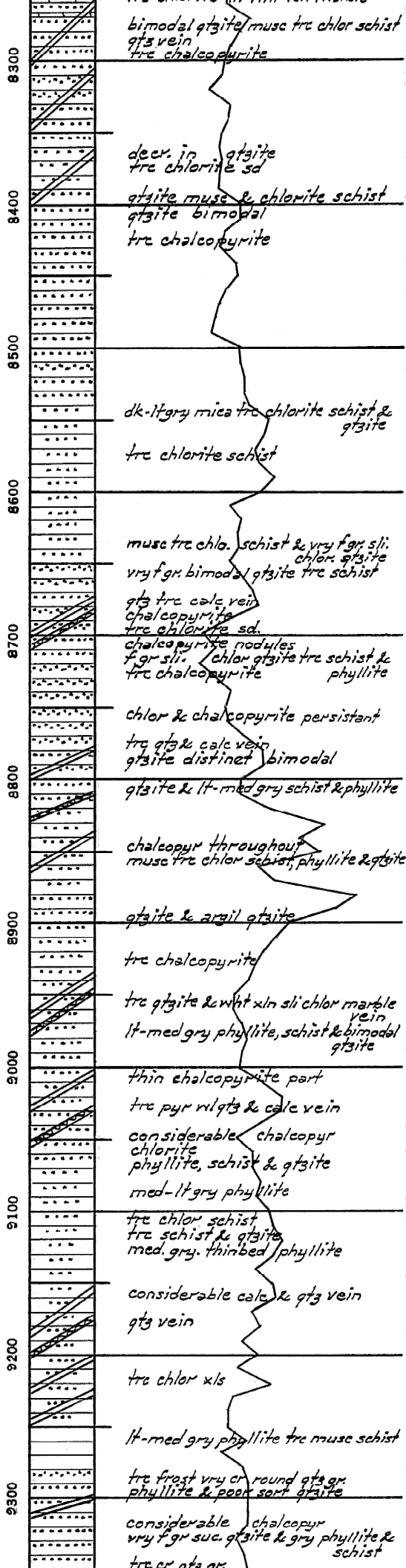


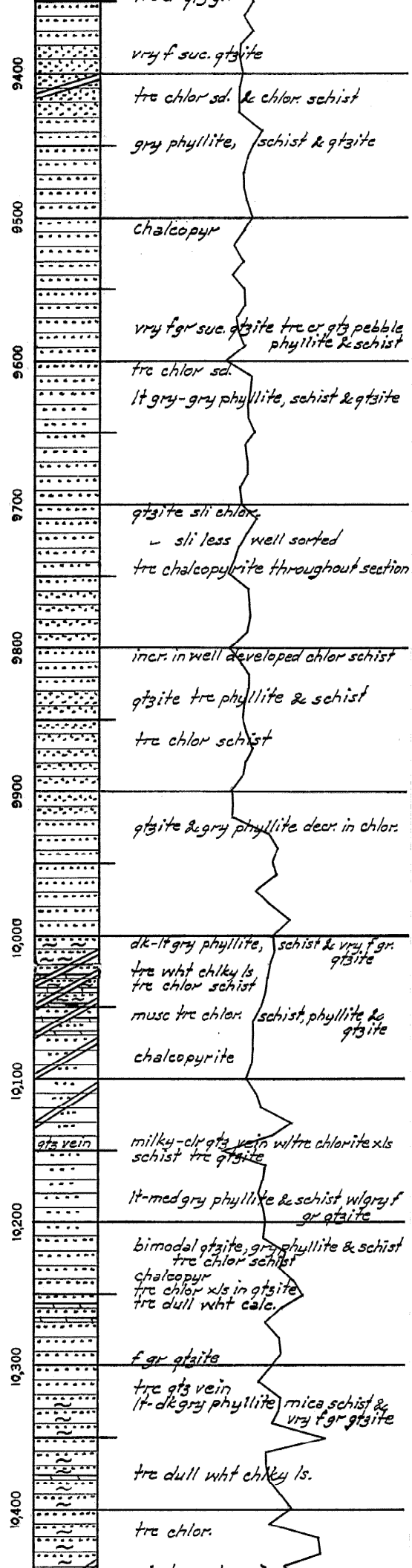


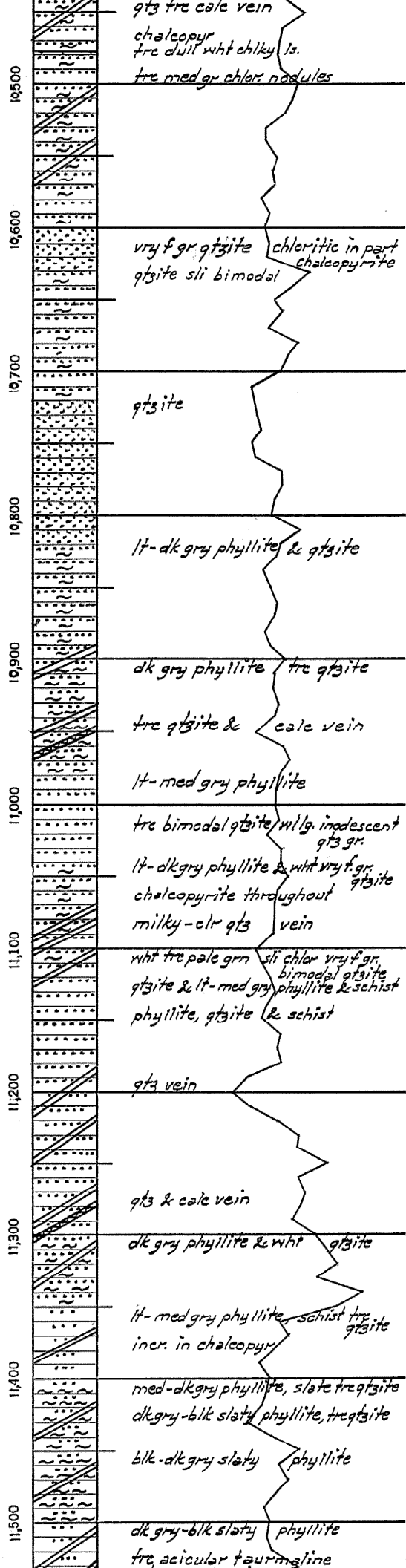


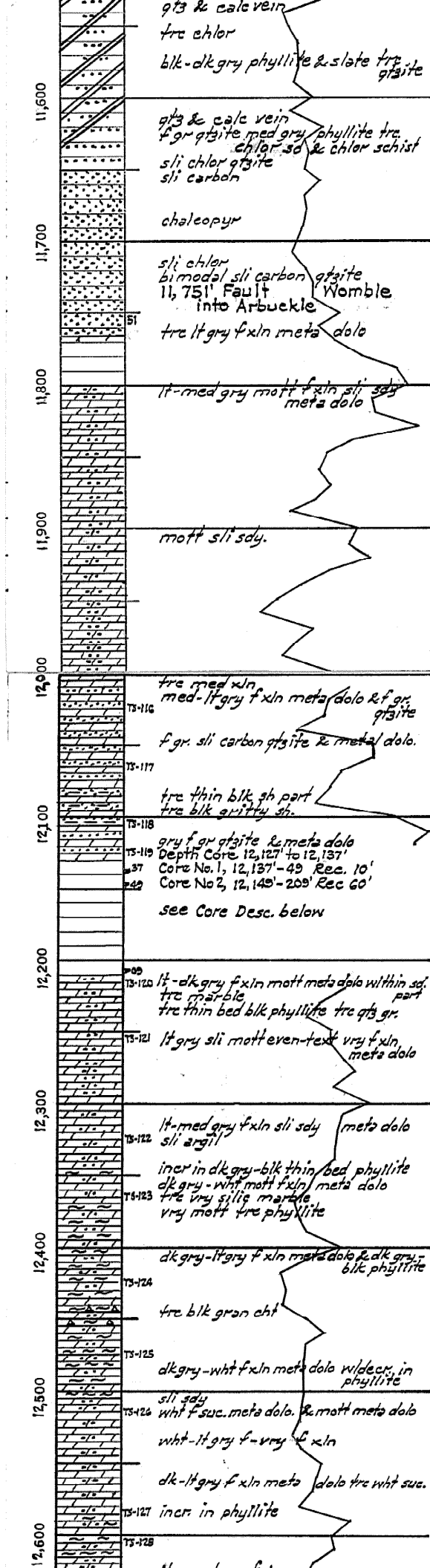


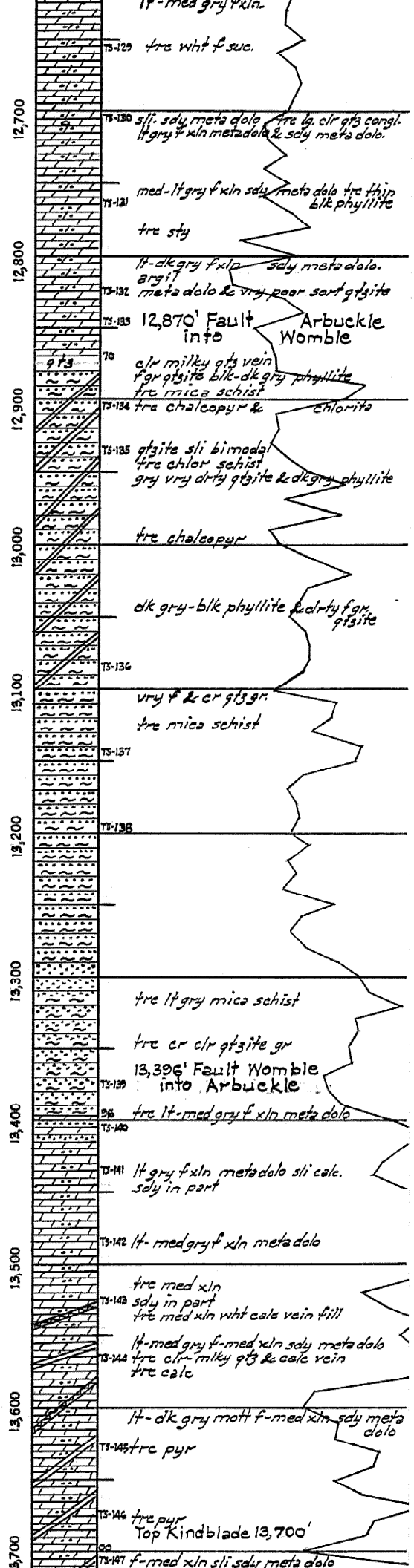


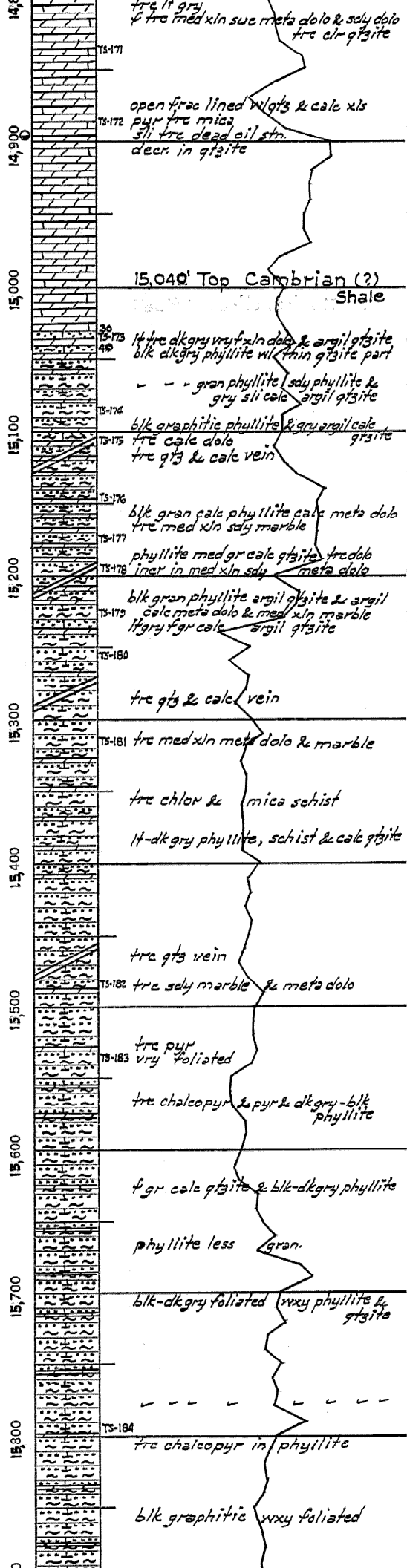


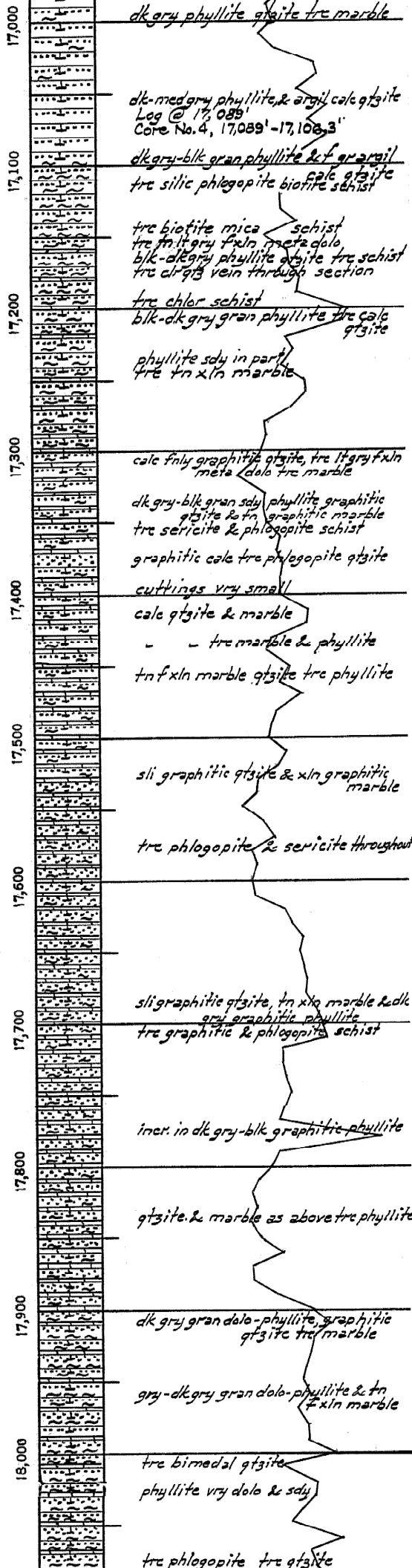


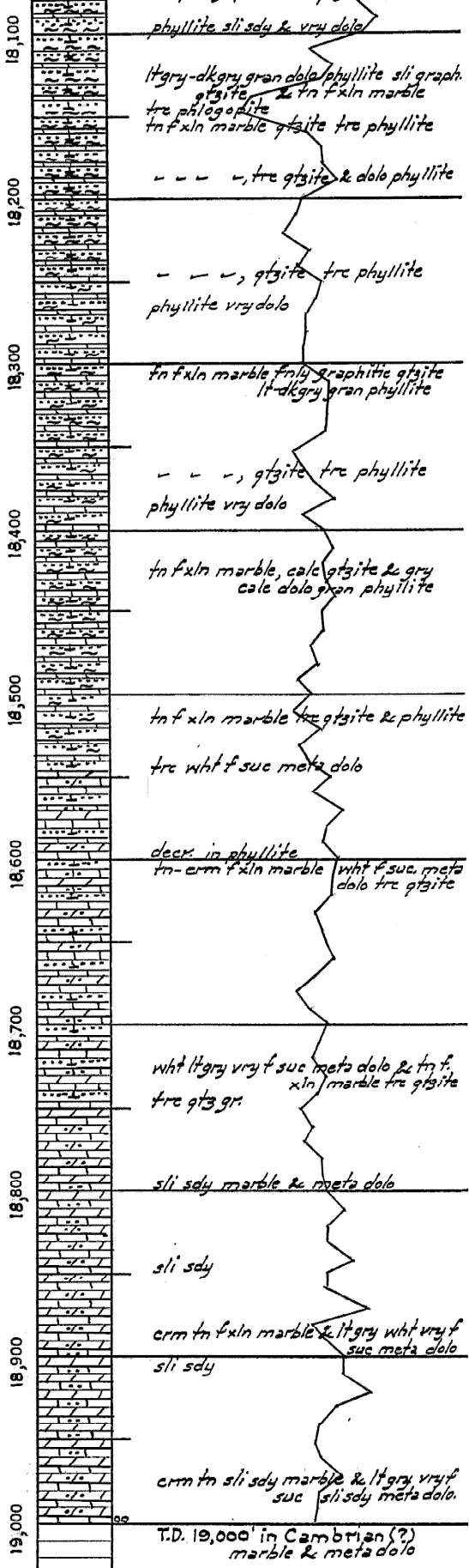


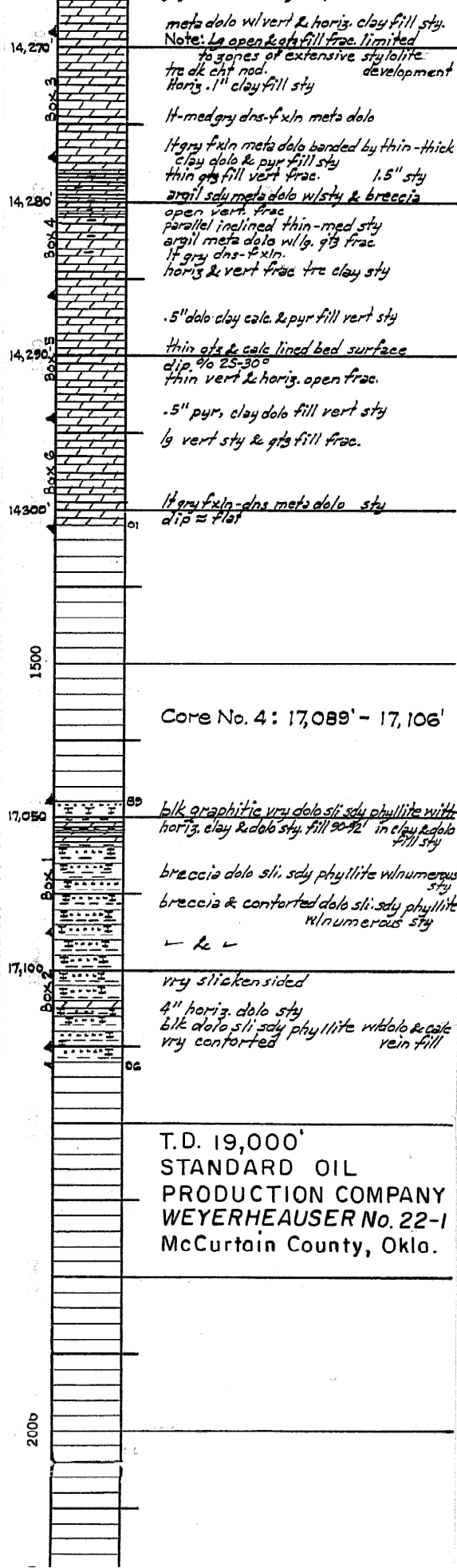












meta dolo w/vert & horis. clay fill sty.
 Note: Lg open & qb fill frac. limited
 to zones of extensive stylolite
 dev. development
 trc dk chf nod.
 Horiz. .1" clay fill sty

14,270
 Box 5
 14" med gry dns-f xln meta dolo
 14" gry f xln meta dolo banded by thin-thick
 clay dolo & pyr fill sty
 thin qb fill vert frac. 1.5" sty

14,280
 Box 4
 argil sdy meta dolo w/sty & breccia
 open vert. frac
 parallel inclined thin-med sty
 argil meta dolo w/lg. qb frac
 14" gry dns-f xln
 horis & vert frac trc clay sty

14,290
 Box 3
 .5" dolo clay calc. & pyr fill vert sty
 thin qb & calc lined bed surface
 dip 25-30°
 thin vert & horis. open frac.

14,290
 Box 2
 .5" pyr, clay dolo fill vert sty
 lg vert sty & qb fill frac.

14,300
 Box 1
 14" gry f xln-dns meta dolo sty
 dip = flat

Core No. 4: 17,089' - 17,106'

17,050
 Box 1
 blk graphitic vry dolo sli. sdy phyllite with
 horis. clay & dol. sty. fill 90-92' in clay & dol.
 fill sty
 breccia dolo sli. sdy phyllite w/numerous
 sty
 breccia & contorted dolo sli. sdy phyllite
 w/numerous sty
 - & -

17,100
 Box 2
 vry slickensided
 4" horis. dolo sty
 blk dolo sli. sdy phyllite w/dolo & calc
 vry contorted vein fill

T.D. 19,000'
 STANDARD OIL
 PRODUCTION COMPANY
 WEYERHEAUSER No. 22-1
 McCurtain County, Okla.